

OLI THE OWL

Have a hoot making Oli the owl ... and then create a whole nest of feathery friends if you fancy.

TO MAKE ONE OWL YOU WILL NEED:
 1 toilet-roll tube
 1 sheet of A4 paper, coloured or patterned
 Pencil
 Scissors
 Black felt-tip pen
 Sticky tape

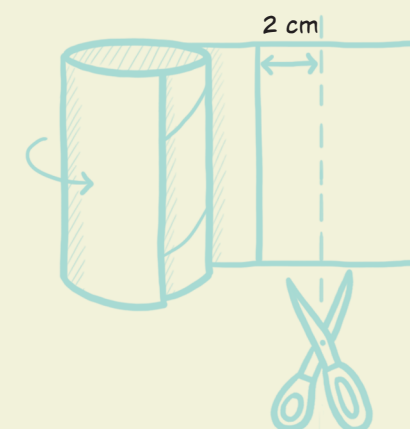


1. Place the toilet-roll tube so that the bottom of it lines up with the bottom of the piece of paper.

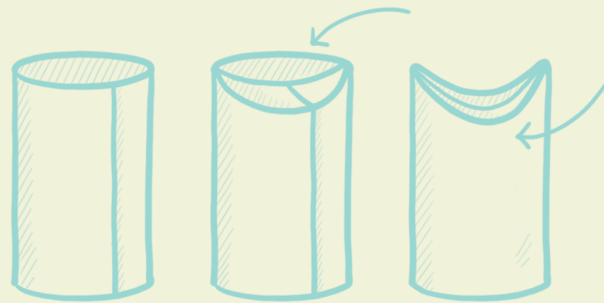


2. Use a pencil to mark where the top of the tube comes to. Fold the piece of paper at this point and cut along the fold. The paper will now be the same height as the tube.

3. To make the paper the right length, wrap it around your tube and make a mark so that the two edges overlap by 2 cm. Cut along in a line from this point.



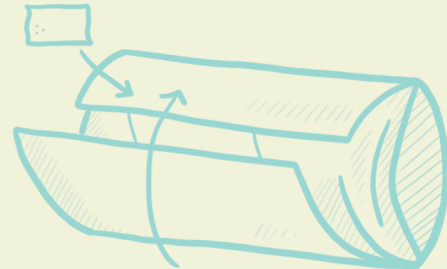
4. Wrap the paper around the tube. Hold it in place with one hand and use the other hand to push the front edge of the tube inwards to the centre of the tube to create a semi-circle shape. Do the same with the back edge of the roll. This will form the owl's ears.



5. Lay the paper flat again and draw your owl design. Use the semi-circle imprint as a guide to show where to position your drawing. You could use one of the designs from the owls on the previous page or create your own.



6. Finally wrap the paper around the tube. Make sure your owl design lines up with the ears and secure with sticky tape. Fold the front and the back of the paper inwards so they meet in the middle with the already-folded cardboard and form the ears.



YOU CAN DRAW DIRECTLY ON TO THE TOILET-ROLL TUBE INSTEAD OF WRAPPING IT IN PAPER, IF YOU PREFER.



PERFECT POTS

Create the perfect place to keep your pencils.

TO MAKE ONE PENCIL POT YOU WILL NEED:

1 toilet-roll tube

Masking tape

Double-sided sticky tape

A circle of card, the same circumference as the toilet-roll tube

Scissors

Ribbons of different colours, patterns and widths



1. Cover one end of the toilet-roll tube with strips of masking tape.



2. Using double-sided sticky tape, stick the circle of card to the masking-taped end of the tube.



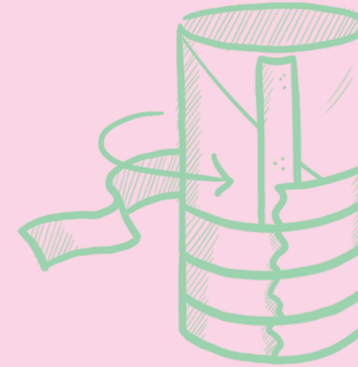
3. Cut lengths of different types of ribbon, all the same circumference as the tube. You will need around 12 lengths, depending on how wide your ribbons are.



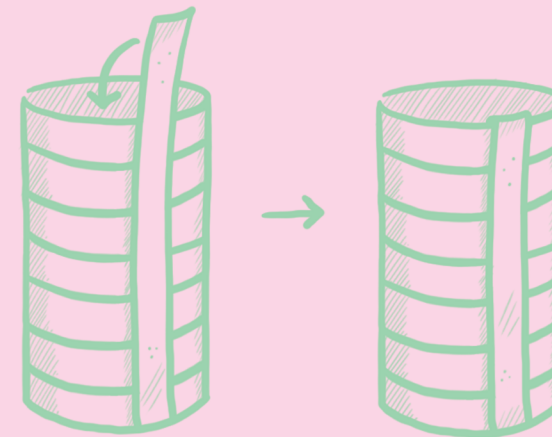
4. Stick two lengths of double-sided sticky tape down opposite sides of the tube.



5. One at a time, wrap each ribbon around the circumference of the tube, securing it to the double-sided sticky tape. Make sure the ribbon ends all meet in the same place.



6. To hide the row of ribbon ends, stick a length of ribbon over them, using double-sided sticky tape to secure it. Fold the end of this piece of ribbon down the top end.



YOU COULD MAKE A DIFFERENT COLOUR PENCIL POT FOR EACH DIFFERENT-COLOUR SET OF PENS AND PENCILS.



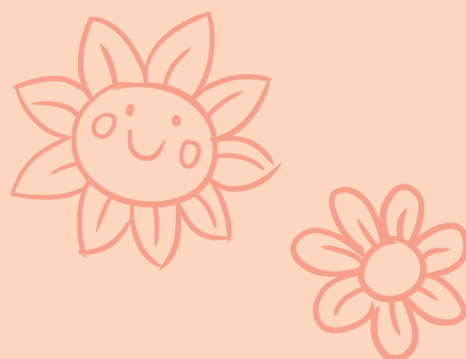
ROCKING ROCKETS



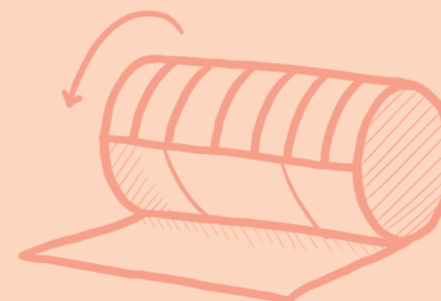
These colourful rockets really do look like they are zooming into space.

TO MAKE ONE ROCKET YOU WILL NEED:

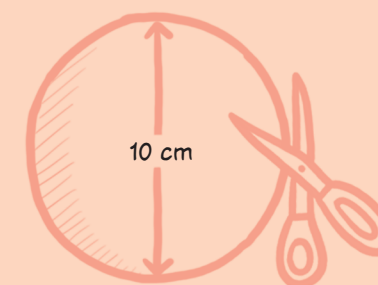
1 toilet-roll tube
Patterned paper
Sticky tape
Scissors
Coloured card
Compass and pencil
Double-sided sticky tape
Length of string, about 30 cm long
PVA glue
Assorted ribbon



1. Cover the toilet-roll tube by rolling it in the patterned paper and securing the paper with sticky tape. Trim the paper to size with scissors if needed.



2. To make the top of the rocket, cut a circle of coloured card about 10 cm in diameter.



USING WIGGLY RIBBONS FOR THE
ROCKET'S TAIL REALLY MAKES IT
LOOK LIKE IT'S FLYING.

3. Using a pencil, lightly divide the circle into three equal-sized sections. Cut one of these sections out from the circle.



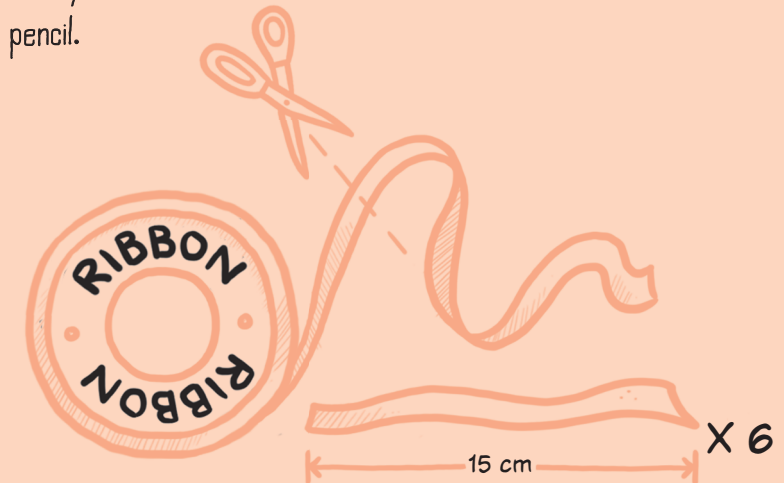
4. Curve the circle piece into a cone shape and secure with sticky tape.



5. Take the piece of string and tie a large knot in one end, then thread the other end through the top of the cone from the underside. If there isn't a space big enough for you to thread the string through, then you can make one by gently poking through with the tip of a pencil.



7. To make the tail of your rocket, cut the ribbon into about six 15 cm-long pieces.



6. Glue the cone to the top of the toilet-roll tube.



8. Tape the lengths of ribbon around the bottom inside edge of the tube.

