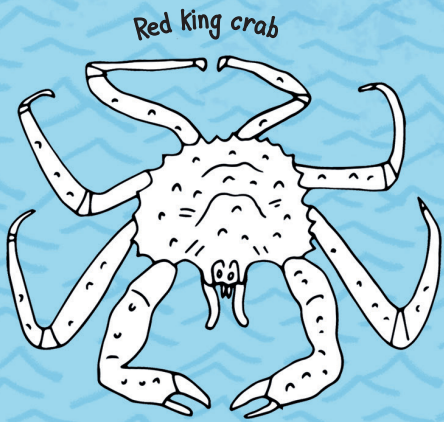
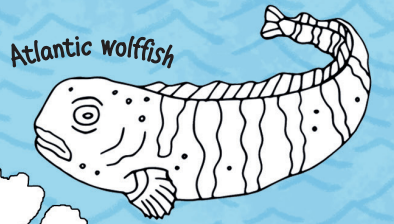
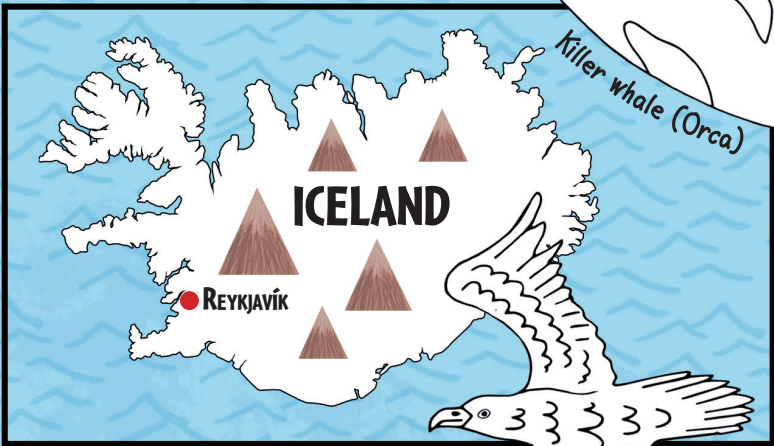
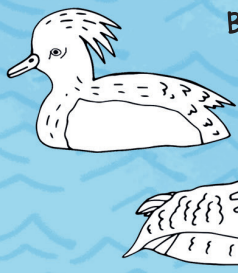
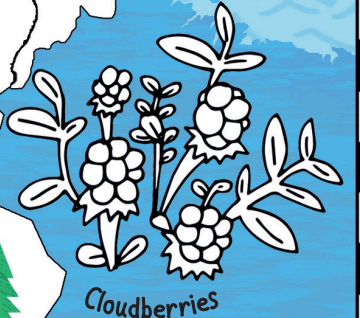


NORTHERN AND CENTRAL EUROPE



White-tailed eagle

FINLAND

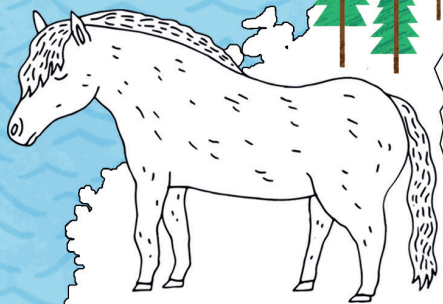


Western capercaillie

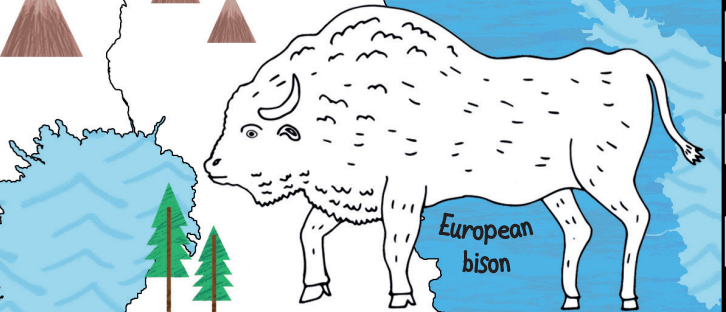
SWEDEN

Norwegian spruce

The Atlantic puffin's beak is grey during the winter and turns colourful again in the spring.



Roe deer



Ringed seals

NORWAY

Oslo

Stockholm

Herring

ESTONIA

Tallinn

LATVIA

Riga

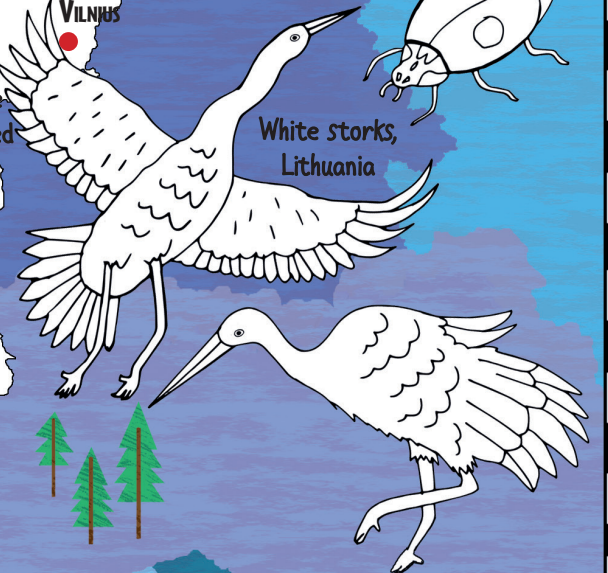
LITHUANIA

Vilnius

The Two-spotted ladybird is the national insect of Latvia.



White storks, Lithuania



It's a mystery why the trees in Poland's crooked forest have grown with curved trunks.

Warsaw

POLAND

CZECH REPUBLIC

Prague

Campanula Gelida



DENMARK

Copenhagen



SOUTH AMERICA



Queen conch

Orinoco crocodile

The three-toed sloth is the world's slowest mammal

Amazonian royal flycatcher

CARACAS

VENEZUELA

COLOMBIA

BOGOTÁ

Pink river dolphins

Jaguar

GEORGETOWN

GUYANA

PARAMARIBO

SURINAME

Boa constrictors can grow up to 13 feet (4 metres) long

Scarlet Macaw

Hawksbill sea turtle

The Amazon is the largest tropical rainforest in the world

Jaguar

Bromeliad

Three-banded armadillo

Rubber tree

BRAZIL

South American Tapir with baby

Harpy eagle

Blue morpho butterfly

Piranha

BRASÍLIA

Blue-bellied parrot

Toucan

Scarlet ibis

Acai palm with berries

A giant anteater eats around 35,000 ants a day

Heliconia plant

Cacao pods

Yellow-banded poison dart frog

Cacao tree

Manatee

Common vampire bat

Golden lion tamarin

Spotted eagle ray

Greater Rhea, Brazil

South American sea lion

Humpback whale

