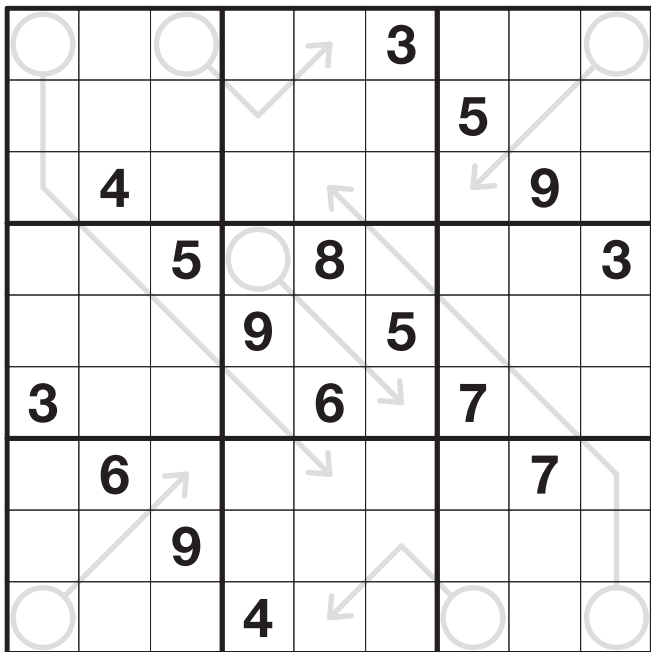


▪ Arrow Sudoku ▪



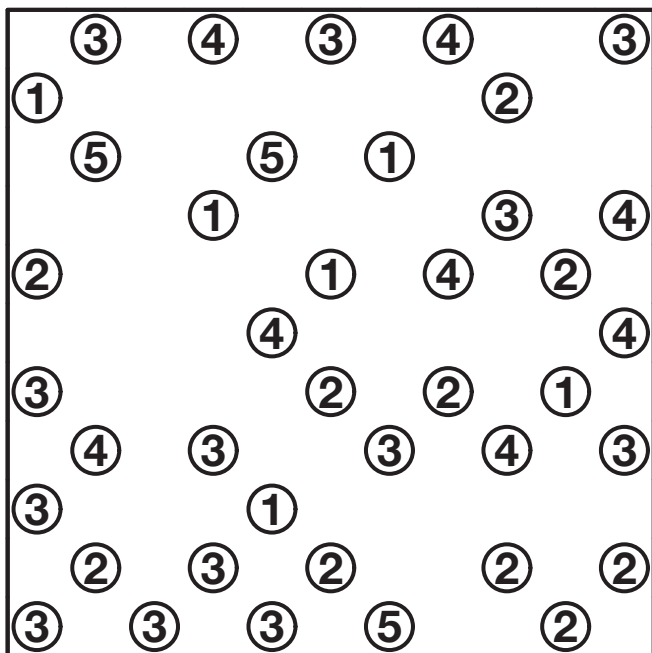
Instructions

Place a digit from 1 to 9 into every empty square, so that each digit appears once in every row, column and bold-lined 3×3 box.

- Circled squares must contain a value equal to the sum of the digits along their attached arrows.

Your solving time: _____

▪ Bridges ▪

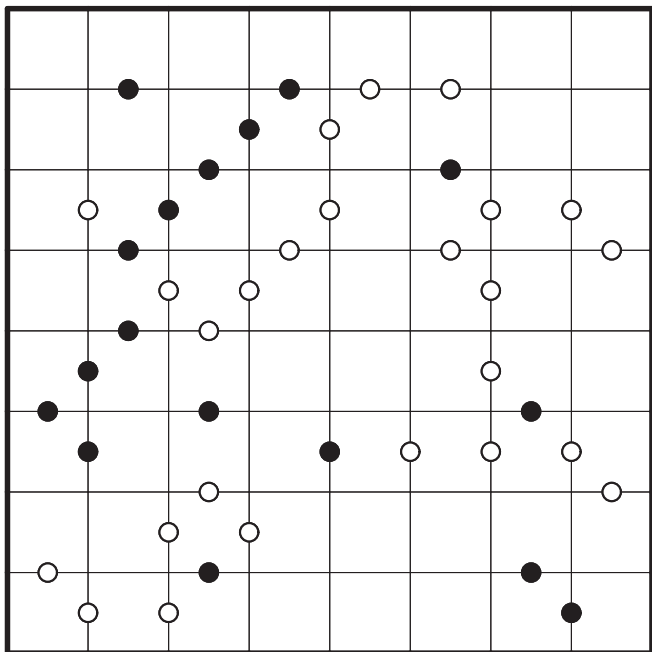


Instructions

Draw horizontal and vertical lines to represent bridges joining pairs of islands. Islands are indicated by circled numbers, where the number specifies the number of bridges that connect to that island.

- Any pair of islands may be joined by up to two bridges.
- Bridges may not cross either another bridge or an island.
- All islands must be joined together by the bridges, so you can travel to any island just by following the bridges.

■ Kropki ■



Instructions

Place digits from 1 to 8 once each in every row and column.

- Squares separated by a white dot must contain two consecutive numbers, such as 2 and 3, or 5 and 6.
- Squares separated by a black dot must contain numbers where one is twice the value of the other, such as 2 and 4.
- All possible dots are given – except where both a black and a white dot could be given, in which case only one dot is shown. The absence of a dot is therefore significant.

Your solving time: _____

■ Kakuro ■

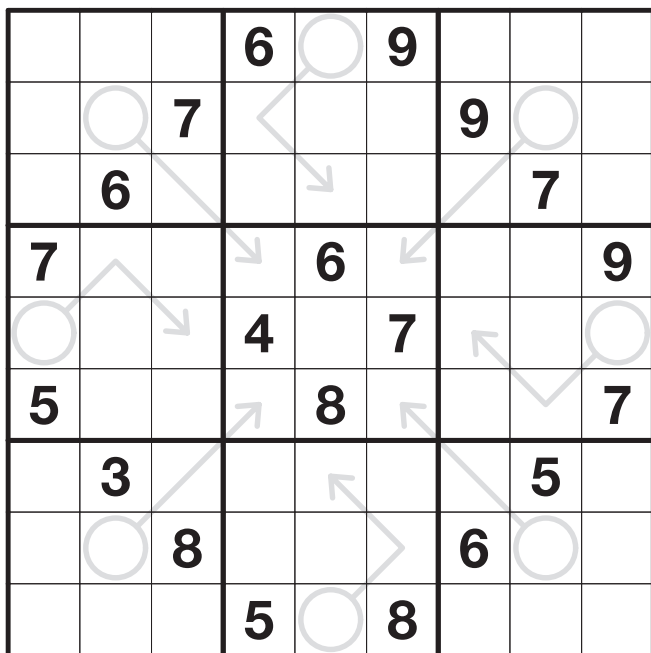
	4	6	7		4	11		
7				4				
6				3			5	3
	6				6			
	3	4	13	20				
17						6	15	
6				14				3
		3			7			
		4			6			

Instructions

Place a digit from 1 to 9 into each white square, and so that no placed digit repeats in any consecutive horizontal or vertical 'run' of squares.

- Each horizontal or vertical 'run' has a total given immediately to its left or above respectively. The digits in that run must add up to the given total.

▪ Arrow Sudoku ▪



Instructions

Place a digit from 1 to 9 into every empty square, so that each digit appears once in every row, column and bold-lined 3×3 box.

- Circled squares must contain a value equal to the sum of the digits along their attached arrows.

Your solving time: _____