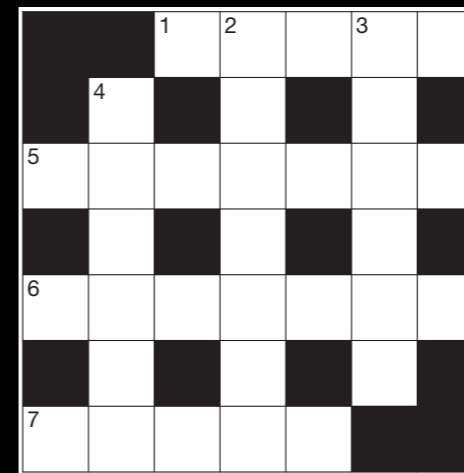


Puzzle 10



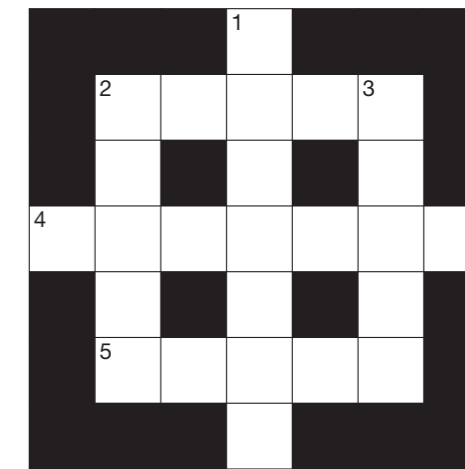
Across

- 1 Back bones (5)
- 5 Noise that accompanies lightning (7)
- 6 Thick, sticky liquid made from sugar (7)
- 7 Animal kept for wool and meat (5)

Down

- 2 Food made on Shrove Tuesday (7)
- 3 Thin piece of metal used for sewing (6)
- 4 Christian building of worship (6)

Puzzle 11



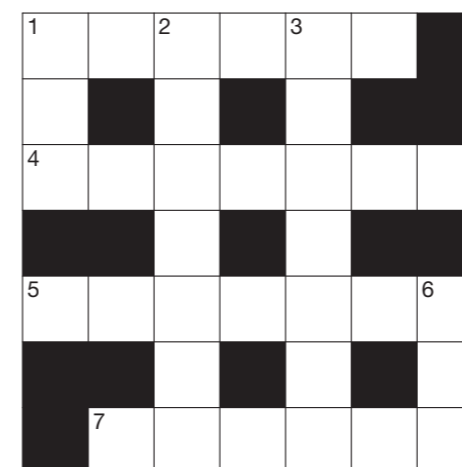
Across

- 2 Huge person in fairy tales (5)
- 4 Difficult; complicated (7)
- 5 Walk like a soldier (5)

Down

- 1 Blood-sucking monster (7)
- 2 Someone who looks after horses (5)
- 3 What you bite your food with (5)

Puzzle 12



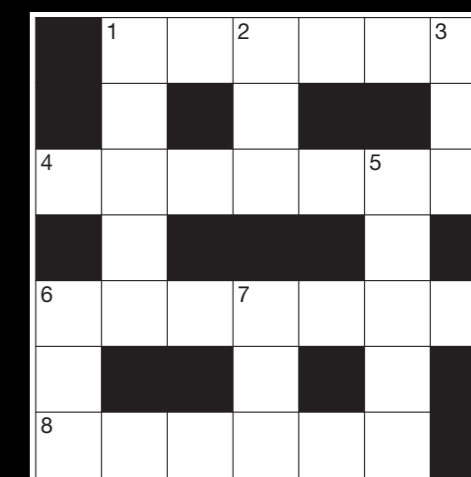
Across

- 1 A rich, moist cake, often topped with cherries (6)
- 4 Someone who educates you (7)
- 5 Woman in a play (7)
- 7 Someone you like and know (6)

Down

- 1 Instinctive thought: a ___ feeling (3)
- 2 Vehicle used on farms (7)
- 3 A sports player (7)
- 6 Unhappy (3)

Puzzle 13



Across

- 1 Well known (6)
- 4 Place to catch a train (7)
- 6 Speak secretly (7)
- 8 Fantasy fire-breathing beast (6)

Down

- 1 Go and bring (5)
- 2 Came across someone (3)
- 3 Male child (3)
- 5 Large sea (5)
- 6 Marry someone (3)
- 7 To drop or sink to a lower level (3)